



[The Nature Conservancy in Montana](#)

As of February 2019, The Nature Conservancy has acquired 399,000 acres of private and deeded land of their projected 3.5 million-acre American Prairie Reserve.



NatureVest seeks to source and utilize \$1 billion of investment capital for conservation by 2021. Our team works with our colleagues at TNC and conservation collaborators around the world to source and structure investment products that support TNC's mission. We engage impact investors to source impact capital in effective, scalable ways—using TNC's deep insights in science, policy and practice.

183 square miles: [Nature Conservancy buys 183 square miles in Montana](#) Oct 27, 2014

117,000 acres: [Nature Conservancy Buys 117,000 Acres Of Plum Creek Land In Western Montana](#) Jan 22, 2015

165,000 acres: [Behind one of the Nature Conservancy's largest ever forest purchases](#) Jan 30, 2015

5,500 acres: [Land deal expands Blackfoot recreation corridor](#) Dec 26, 2016

5,000 acres: [Conservation group buys ranch, sells it back to Montana landowners](#) Feb 17, 2019

Great Western Checkerboards

In 2014, The Nature Conservancy initiated a collaborative conservation project, called the Great Western Checkerboard Project, to preserve recreational access and help conserve the ecological integrity of 165,073 acres (257 square miles) of forests, rivers and wildlife habitat in the eastern Cascade Mountain Range of Washington and in the Blackfoot River Valley in Montana. Through NatureVest, the Conservancy is using interim financing to acquire the lands from the Plum Creek Timber Company, including 47,921 acres in the Yakima River Headwaters in Washington and 117,152 acres in the Lower Blackfoot River Watershed in Montana.



[The Trust for Public Land](#)

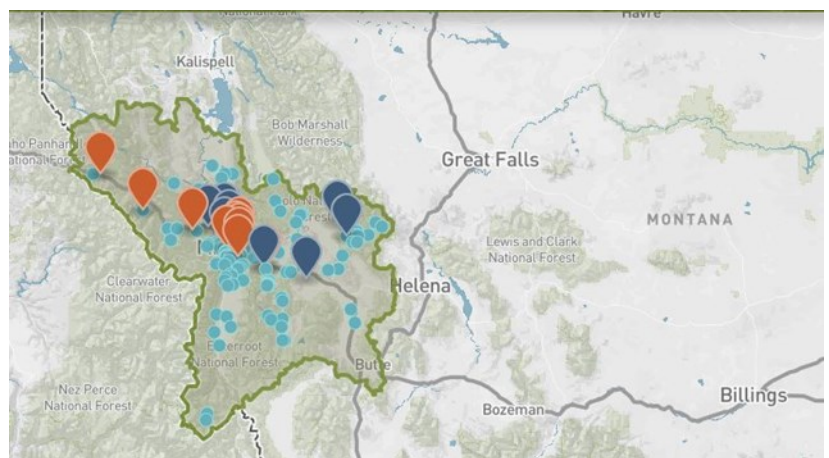
[The Plan: Greenprinting](#)

[The Montana Legacy Project](#)



[Five Valleys Land Trust](#)

[Five Valleys Land Trust shepherds new conservation easements near Philipsburg, Garrison](#) – Feb 14, 2019





**FLATHEAD
LAND TRUST**

CONSERVING OUR LEGACY OF LAND AND WATER

Flathead Land Trust

Land Protection Snapshot

Conservation easements held: 60

Easement acres protected: 11,407

Acres protected with partnerships: 3,067

Total acres protected: 14,474 (view map)



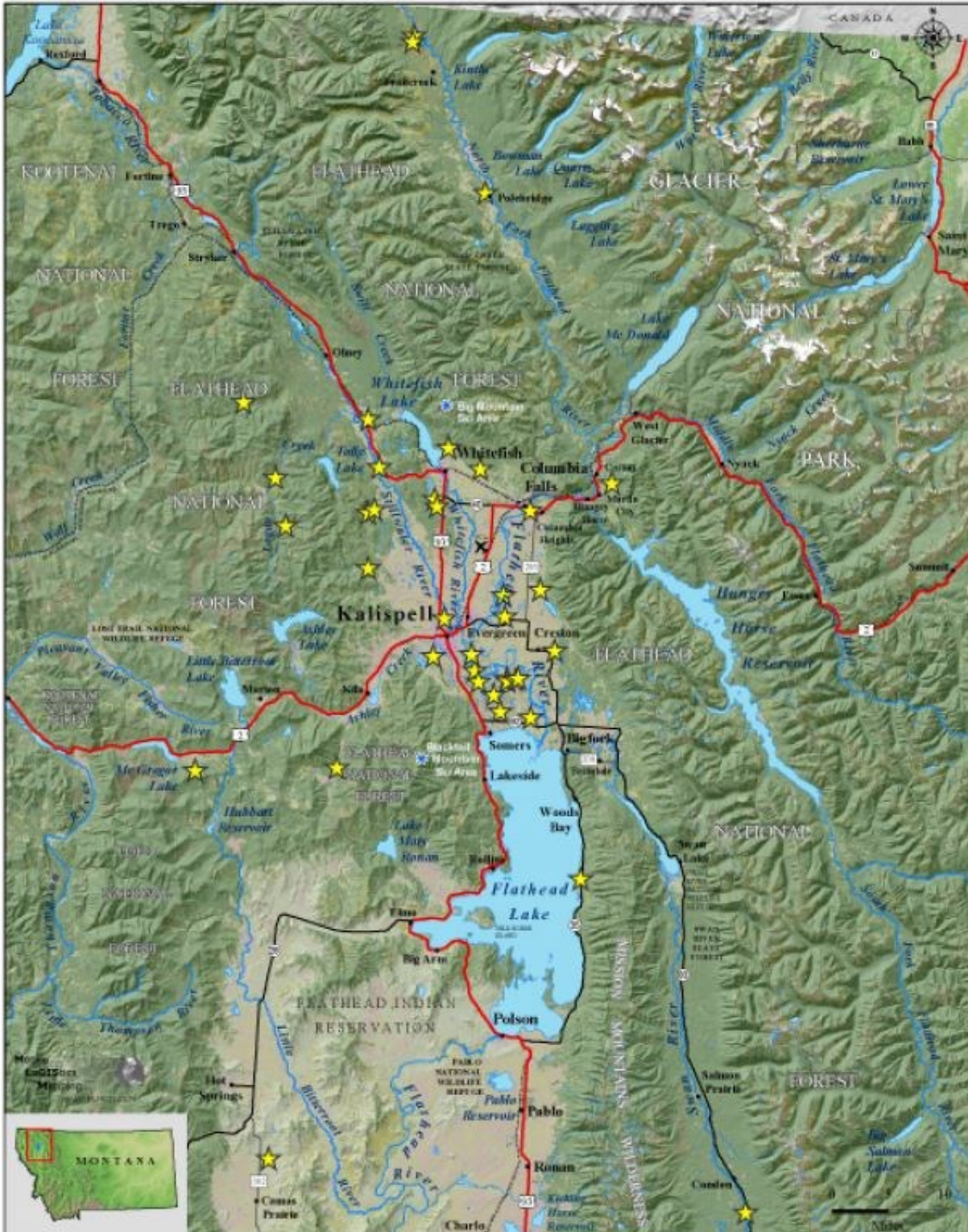
**FLATHEAD
LAND TRUST**
Conserving Our Legacy of Land and Water

Private Land Conservation in
Northwestern Montana since 1985



Protected Acres

43 Easements = 9,621 acres
8 Partner Projects = 2,134 acres





[The Land and Water Conservation Fund](#)

Partners with Montana Association of Land Trusts, Montana Land Reliance, Montana Mountain Bike Alliance, Montana Recreation and Parks Association, Montana Trout Unlimited, Montana Wilderness Association, Idaho Coalition of Land Trusts, Idaho Conservation League, Idaho Cycling Enthusiasts, Idaho Mountain Bike Trail Preservation Association, Idaho Outdoor Business Council, Idaho Rivers United, Idaho Wild Sheep Foundation, Idaho Wildlife Federation, Sierra Club, The Nature Conservancy, World Wildlife Federation and many, many, many more.



Montana Association of Land Trusts Private Land Conservation

The mission of the Montana Association of Land Trusts (MALT) is to promote and support excellence in private voluntary land conservation in Montana through leadership, collaboration, education and outreach.

MALT is a group of 12 separate nonprofit land trust organizations working on private land conservation and voluntary conservation agreements throughout the state of Montana.

The 12 land trusts work with private landowners to obtain conservation easements that maintain working farms and ranches, protect water quality, protect wildlife habitat, preserve open lands and retain the values that make Montana such an attractive place to live, work and recreate. [Click to learn more.](#)